



See  
Tree

The Intelligence Platform for Trees!

# We are relying on trees for so much of our future!

Microsoft buys carbon credits in forest to offset pollution

The US is about to go all-in on paying farmers and foresters to trap carbon

Investors see missing data as key hurdle for biodiversity action

## TRILLION TREE CAMPAIGN

Cargill launches U.S. carbon farming program for 2022 season

A new market in 'carbon offsets' is blossoming, drawing huge companies who pay timber owners not to cut down trees

Australian carbon credit prices hit record high on demand surge

but our way to  
manage them  
hasn't been  
changed for  
hundreds of  
years...



**In order to  
manage such a  
complex  
challenge, we  
need excellent  
data**





**The Intelligence Platform for Trees!**

## Intelligence Platform for Trees

*One of the fastest-growing Agri-tech companies with a grand vision of becoming a **world leader in tree intelligence, providing deep actionable insights to farmers and tree owners.***

### 140+ Team Members

Founded in 2017.  
Over 200% growth since Jan  
2019

### Global Presence

Serving customers across  
geographies, operating local  
teams in the US, South Africa,  
South America and Europe

### Funding

Raised over \$45M.  
Backed by leading global VCs &  
agriculture players;  
*IFC, Hanaco, Orbia-Netafim,*  
*Kubota, Citrosuco, VCs and*  
private investors

# Intelligence Platform for Trees

*Providing deep actionable insights to farmers and tree owners*



**Digitize**



**Measure**



**Monitor**

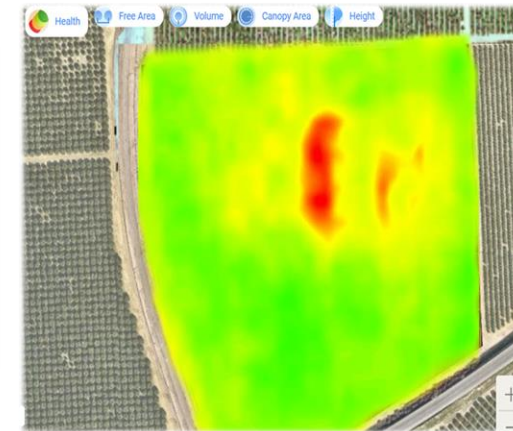


**Optimize**

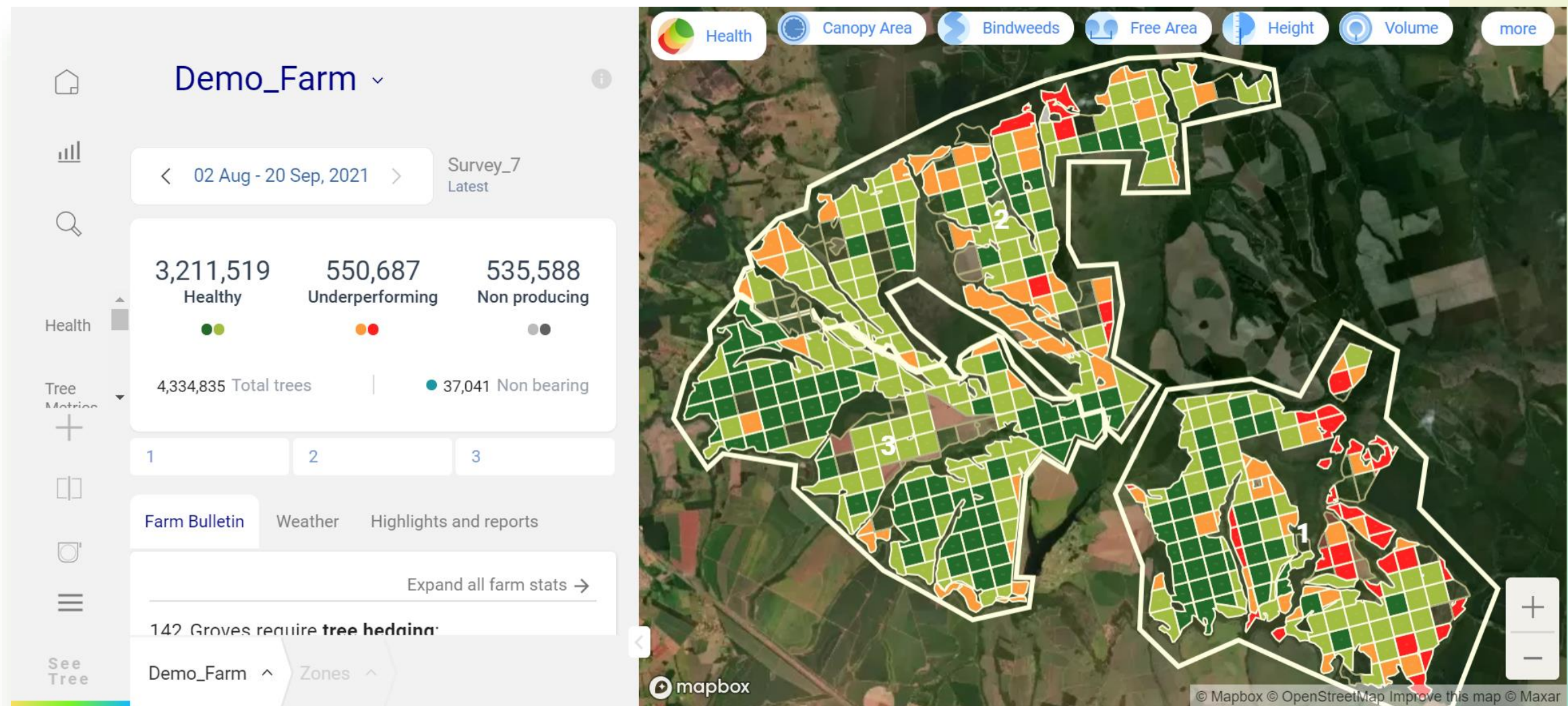
# How do we do it?

## A Data Acquisition and Analysis Campaign!

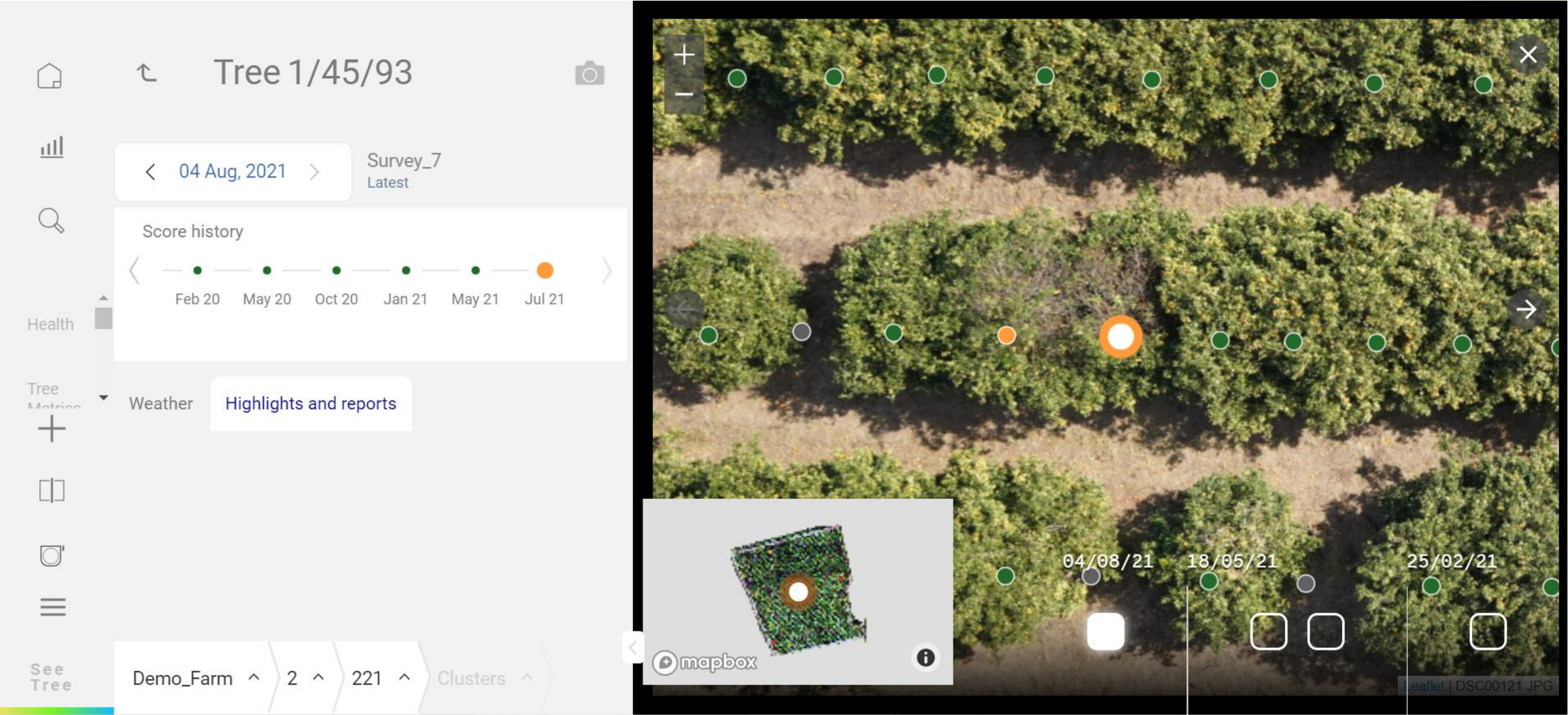
- Multi-layered Sources
- AI & HI



# Farm-level view



# Tree-level view

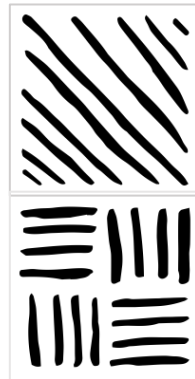


# Ushering in the role of trees for a sustainable future

See  
Tree



Utilizing trees for carbon sequestration



Improving farming sustainability & carbon footprint with better practices

# Tree Centric Approach

Perspective 30°

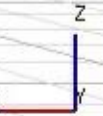
Snap: Edge, 3D

2019  
Health Score

Health Score: 5

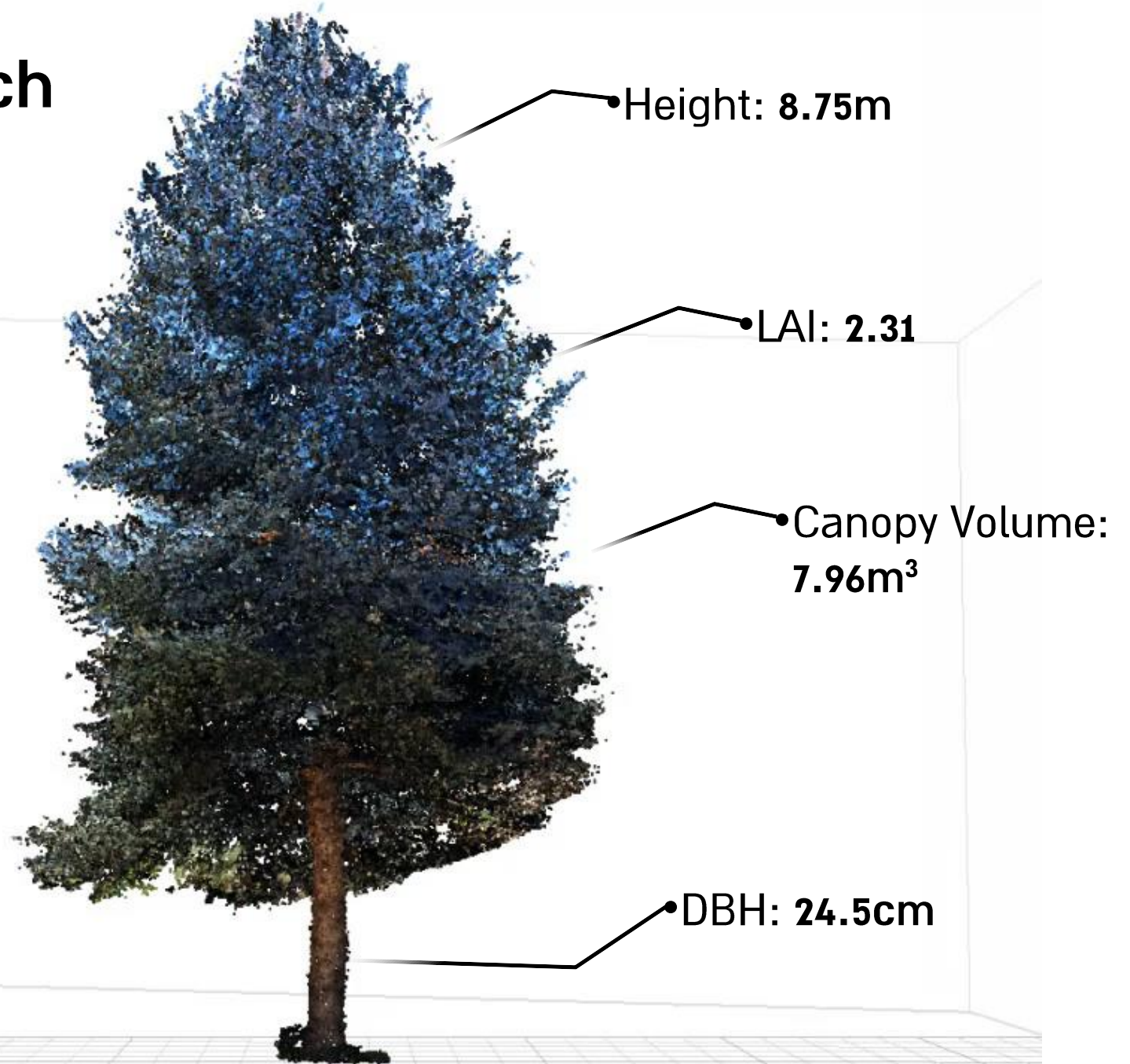
Canopy Volume:  
5.8m<sup>2</sup>

points: 2,073,128



# Tree Centric Approach

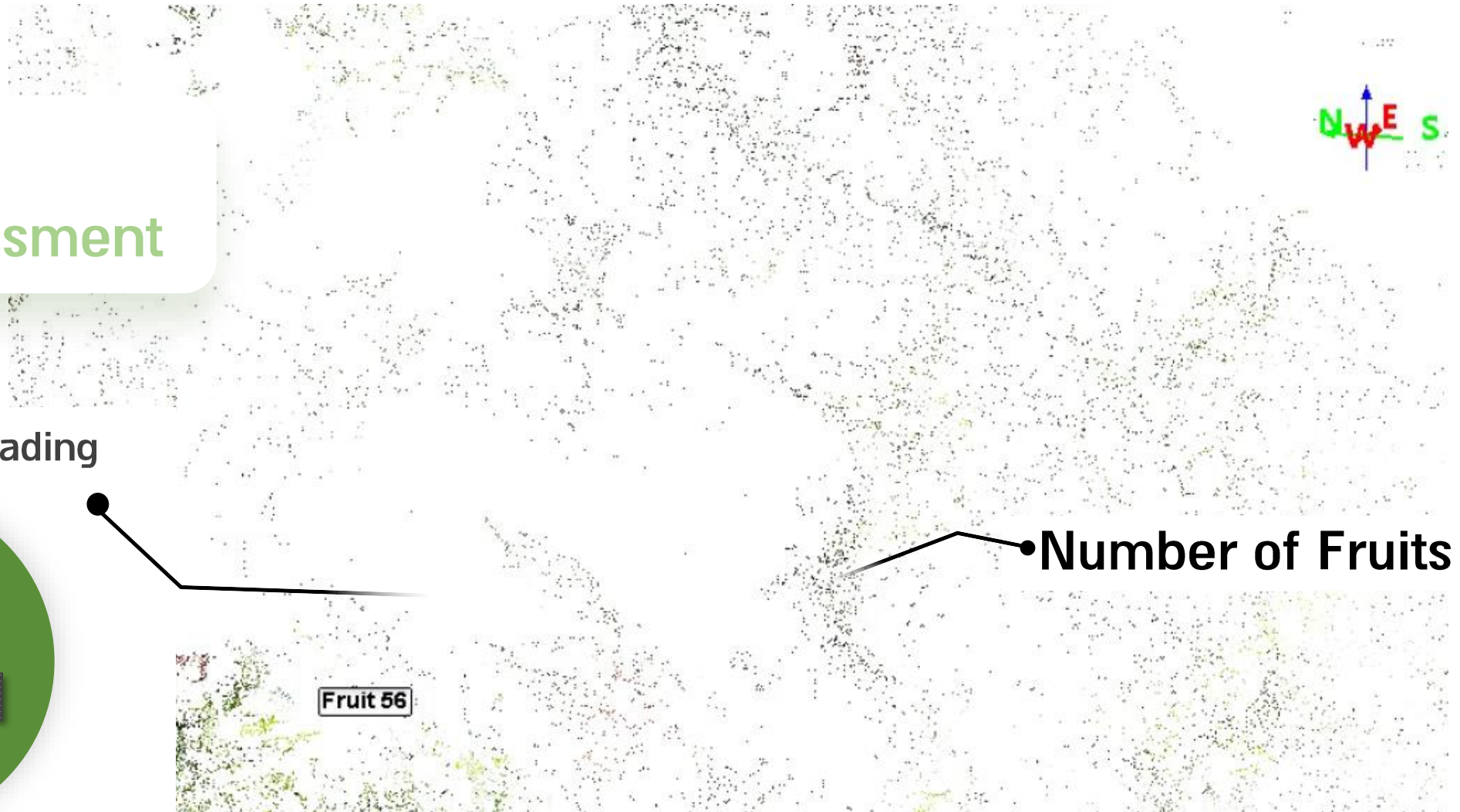
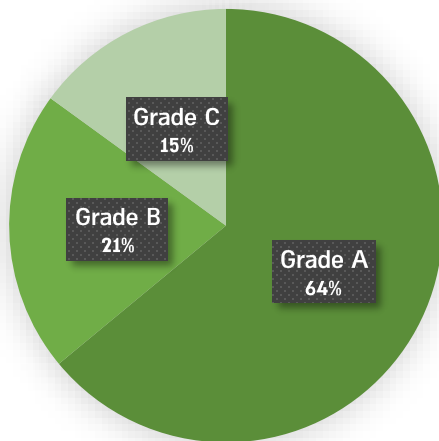
2020  
Geo Analytics



# Tree Centric Approach

## 2021 Fruit Assessment

### Estimated Fruit Grading



# Building carbon stock estimations bottom-up

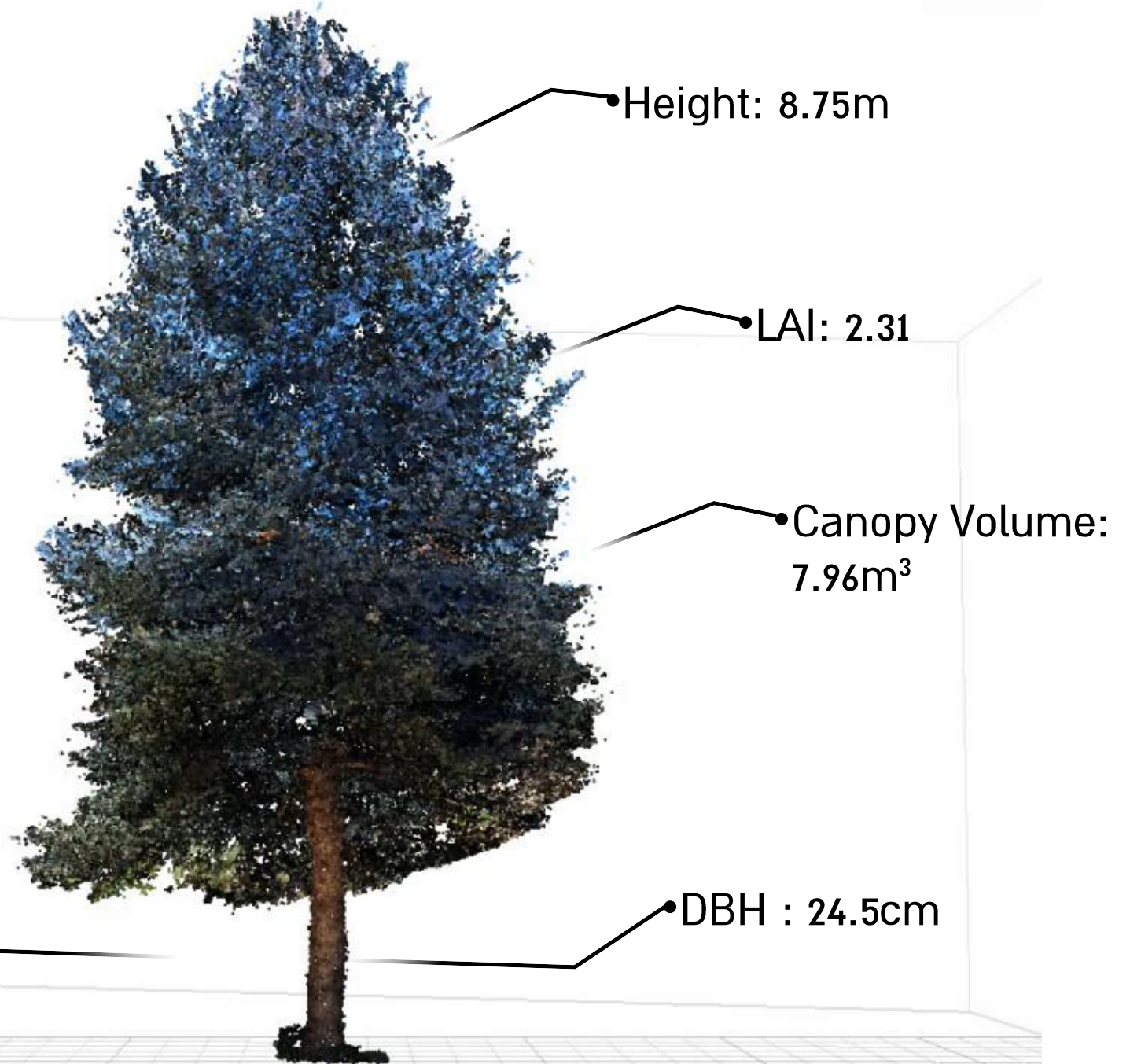
An aerial photograph of a vast forest landscape with rolling hills and valleys. A green dot is placed on a specific tree in the middle-left area of the image. A green line extends from this dot towards a white rectangular text box. The text box contains the text 'Tree ID: 1/12/455'. The forest is dense and green, with some cleared areas visible in the distance.

Tree ID: 1/12/455

Tree ID: 1/12/455

**2022**  
**Carbon**  
**Sequestration**

Estimated CO<sup>2</sup>  
sequestration:  
485Kg in 10 years



# From single tree to full forest carbon stock estimation

**Tract 12: 195,405 kg**

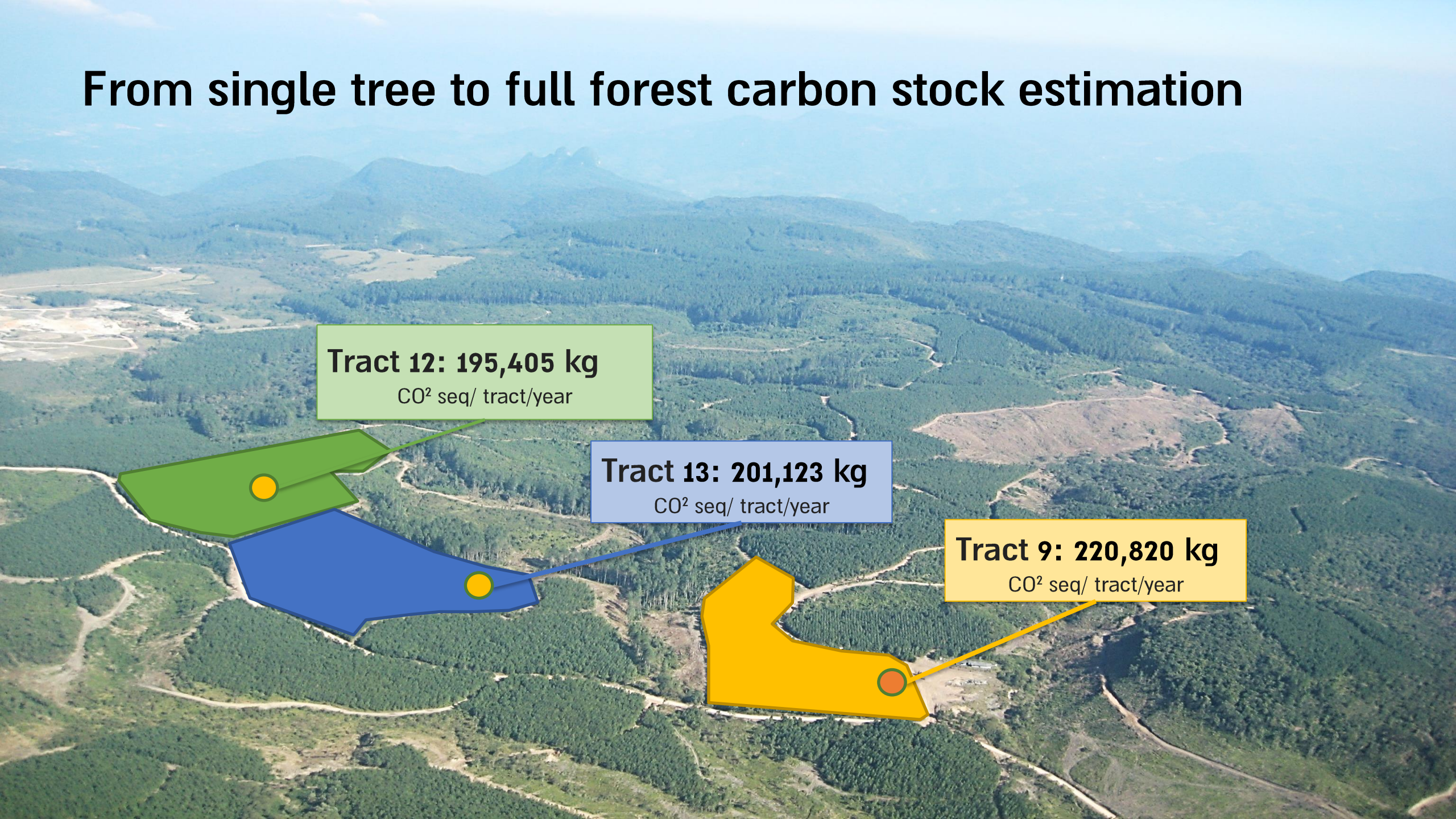
CO<sup>2</sup> seq/ tract/year

**Tract 13: 201,123 kg**

CO<sup>2</sup> seq/ tract/year

**Tract 9: 220,820 kg**

CO<sup>2</sup> seq/ tract/year



*"If a tree falls in a forest and no one is around to hear it, does it make a sound?"*

- Dr. George Berkeley -

By using  we can make sure it does not fall....

**Thank you!**

Israel Talpaz, Co-Founder & CEO  
[israel@seetree.ai](mailto:israel@seetree.ai)